



BarkCONTROL

OPERATIONS MANUAL



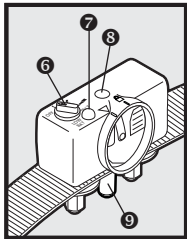
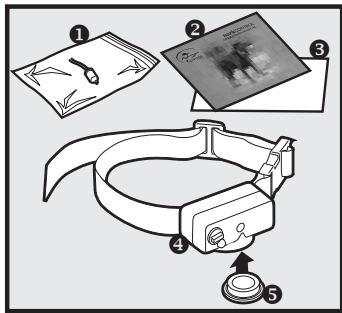
INTRODUCTION

The Deluxe Bark Control Collar is a training device that helps reduce nuisance barking. Please study this manual thoroughly.

There are two key features of the Bark Control Collar. The first is a mild warning sensation triggered by your dog's first bark. The second feature occurs when your dog barks again within 30 seconds of the first bark. The unit will deliver the level of correction of the current switch setting (LOW, MED and HIGH), with six levels of progressive correction for each setting. Each successive bark will increase the correction level by 25% if the bark is within 30 seconds of the previous bark. If your dog does not bark for at least 30 seconds, the unit resets itself. As a built-in safety feature, the collar will automatically shut off for a period of 3 minutes if your dog barks 15 times or more in a 50-second period.

COMPONENTS

- 1- Test-light kit
- 2- Operations Manual
- 3- Warranty Card
- 4- Bark Control unit with adjustable collar
- 5- Patented Battery (RFA-67)



EXCLUSIVE FEATURES

- 6- Mode Switch
- 7- LED light
- 8- Sound-Activated Sensor
- 9- Sensor Probe

MODES OF OPERATION

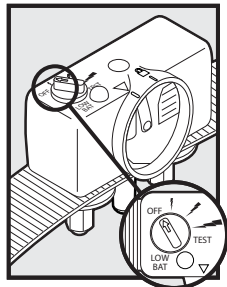
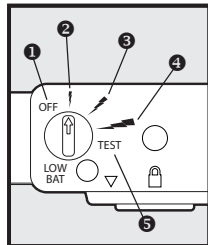
- 1- **OFF**- Turn to this position when not in use to conserve battery life and to avoid accidental correction. Always have the switch in this position when handling the unit.
- 2- **LOW** – Provides lowest level of correction. Always start training at this level. Watch how your dog reacts. If necessary, progress to the next correction level.
- 3- **MED** – Adjust to this level only if your dog does not exhibit the desired reaction to the low correction.
- 4- **HIGH** – Adjust to this level only if your dog does not exhibit the desired reaction to the medium correction.
- 5- **TEST** – this mode helps verify that your unit is working properly (see “Testing the Collar”).

BATTERY ACTIVATION AND REPLACEMENT

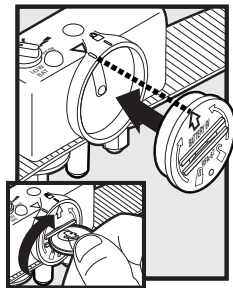
To activate:

- Make sure the mode switch is turned to the OFF position.

4



- Place battery in unit, aligning arrow on the battery with the triangle symbol on the unit.
- Turn the battery clockwise, aligning the arrow on the battery with the padlock symbol on the unit.



To replace:

- Make sure mode switch is turned to the off position.
- Using a coin, turn the battery counterclockwise, aligning the arrow on the battery with the triangle symbol on the unit.
- Pull battery out.
- Follow “To Activate” instructions above.

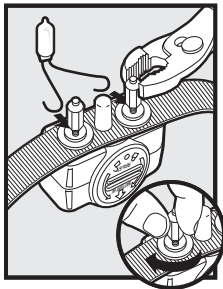
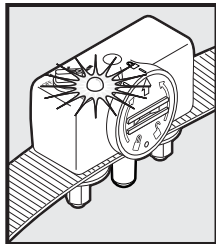
Low Battery warning:

The Deluxe Bark Control Collar has a Low Battery warning feature that indicates when you should replace the battery. The LED will flash once every 2-3 seconds in LOW, MED, HIGH or TEST modes. Once the Low Battery warning occurs, replace the battery within 72 hours. Replacement batteries (RFA-67) are available at the store where you purchased your Bark Collar.

TESTING THE COLLAR

Make sure the mode switch is in the OFF position.

- See “Neon Lamp Correction Test Instructions” to prepare collar for testing.
- Turn the mode switch to TEST and hold the unit about 6-10 inches from your mouth with the LED facing you.
- Say “TEST” loudly into the sensor. This should make the test light flash several times.
- If the light does not flash, check all settings and the battery and test again.



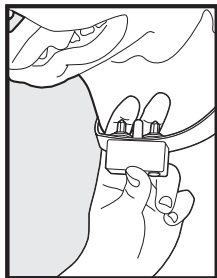
- When finished testing, remove the test light and re-tighten contact points.

Important Note: To avoid accidental correction on yourself, never touch the two metal contact points at the same time.

PLACING COLLAR ON YOUR DOG

Put the collar on your dog, making sure the unit is positioned at your pet's throat. You should be able to place one finger between the contact points and your pet's skin. The contact points must touch your pet's skin for the correction to be effective; you may need to trim your pet's hair.

Important Note: A dog's neck gets wider when they sit, so fit the collar on your pet when they are standing comfortably.



Attention: For comfort, safety and effectiveness of product, please ensure the following:

- During the first 2 days of training, do not use the training device on your dog without direct supervision.
- Check the fit to prevent excessive pressure by being able to insert one finger between the metal contact point and your dog's skin.

- The dog must be carefully examined daily for any signs of a rash or sore.
- If a rash or sore is observed, discontinue the use of the collar for a few days.
- If the condition persists beyond 48 hours, see your veterinarian.
- The dog's neck area and the contact points must be washed weekly with a wash cloth and mild hand soap, then rinsed thoroughly.

A condition called Pressure Necrosis, which is a devitalization of the skin due to excessive and prolonged contact against the collar, may occur if the steps above are not followed.

TRIMMING COLLAR

If you have excess collar, you will need to trim it. Fit the collar around the dog's neck and mark the appropriate length. Be sure to allow room for your dog's growth. Cut the collar and seal the cut edge by using a match or a lighter.

REGULAR MAINTENANCE

- Check your dog's neck for irritation and wash neck (daily).
- Check fit of collar on dog (daily).
- Check battery battery for proper fit in unit (weekly).
- Check contact points for tightness (weekly).
- Clean contact points (weekly).

TRAINING

Before beginning training with the Bark Control System

Bark control training systems were created to help dog owners deter unwanted barking. They can be used to control barking when the owner is not present or in other specific situations; however, success is dependent on proper use.

Why your dog barks

Barking is a natural behavior for all dogs. But sometimes, a barking dog becomes a problem for his owner. A responsible dog owner cannot let his or her dog become a nuisance to others. Chronic barking put both the dog and the owner at risk of complaints from disturbed neighbors. It can also create unnecessary duties for animal control or police officers charged with upholding anti-barking ordinances. In some cases, it can even lead to the relinquishment of the dog by an owner who cannot solve the problem.

Before a barking problem can be solved, a dog's owner must first understand why the dog is barking. For many dogs, chronic barking or howling is a cry for help. A dog who does not receive enough care or attention from his owner often becomes a barker. Dogs are social animals, and they need exercise and interaction with their human companions – and sometimes other dogs. Some dogs are simply bored when left alone in the home or the yard while the owner is away, and will bark at passersby or at neighborhood

9

disturbances. Owners of these dogs may not understand that a dog cannot be expected to sit quietly and entertain himself while his owner is away. Once a dog owner has determined that the dog's social needs are being met, he or she must look for appropriate and effective ways to control the barking and prevent it from becoming a nuisance to family and neighbors.

Eliminating problem barking

If your dog barks at passersby, try closing him out of rooms or outside areas that border streets and sidewalks when he must be home alone. For dogs kept exclusively indoors, simply putting the dog outside does not usually solve the problem. However, allowing a dog who barks when left outdoors to remain inside can be effective.

For some dogs, barking is simply an entertaining way to spend a long or boring day. Safe chew or play toys may help provide entertainment. A midday visit and a game of fetch with a professional pet-sitter or a trusted adult neighbor can also help to pass the time and prevent barking.

Introducing your dog to the Bark Control system

Before you begin training with an activated system, you should first accustom your dog to a deactivated system. By spending just a few days on this, you can avoid negative reactions from your dog such as cowering at the sight of the collar.

Day One

- Choose a small food reward (about the size of a pencil eraser) that your dog finds desirable and will accept every time.
- Make sure the mode switch is turned to the OFF position.
- Place the bark collar around your dog's neck for 2-3 hours. Be sure the collar is fitted in the same manner that it will be during training with correction.
- After the collar has been on your dog's neck for a short period of time, give him a food reward. Repeat this reward several times.

Day Two

Repeat the above procedure, keeping the bark collar on your dog for 5-6 hours.

Day Three

This is the first day your dog should receive correction.

Training with the Bark Control System

Before placing an activated system on your dog, carefully choose the first situation in which it will be used. The situation should be one with few distractions. If you do train in a situation with distractions, your dog may not associate the correction with something other than his barking. For

example, if your dog first barks when he is looking at a visitor to your home, he may perceive the visitor as the cause of correction instead of his barking.

You should directly observe your dog's first few reactions to the collar. Do not leave your dog alone the first few times he receives a correction. In the first time, your dog may yelp or yip or jump slightly. Do not be alarmed. His first reaction will always be his most intense. After the initial correction, his reactions will gradually lessen. Eventually, he will remain calm and just stop barking.

Train your dog only in this initial situation until he has learned what the consequence to barking is. Only then should you move on to the next situation. This will help ensure that your dog understands that barking is the behavior he must avoid, no matter what his reason for barking.

Long-term training tips

You should notice an improvement in your dog's barking within the first week of training. At this point, some dog owners feel that the problem has been solved, but in most cases it is still not complete. Most, if not every, dog will test this new learning experience by increasing their attempts to get away with barking. This testing period usually occurs during the second week of training. When it does occur, you must remain consistent – do not alter your use of the bark control system.

12

Even after the testing phase has been passed, you must continue to place the bark collar on your dog in every situation where you expect him to not bark. He may see a new dog or a squirrel through a window and bark for the first time in weeks. If he is not wearing the bark collar, he may get away with the barking, and his training may suffer a setback. If he is wearing the bark collar, he will stop barking immediately and any setback will be prevented.

Using the Bark Control system with other devices

You may wish to train your dog to do other things. If you decide to use another type of training tool, be selective with the type you use while your dog is wearing the bark collar. Generally, the dog should not wear more than one electronic collar at a time.

Never use a metal choker collar, or any other metal collar, while your dog is wearing the Bark Control system, as it may trigger false signals and possibly false corrections. If you feel you need a second collar on your dog, try a nylon choker or other non-metallic collar.

If you use a leash, attach it to a second collar as recommended above, and place the second collar above the bark collar. Attaching a leash to the bark collar, placing a collar below the bark collar, or pulling on the bark collar may cause injury to your dog's throat.

Important Note: Before playing with your dog, either turn the unit OFF or remove the collar from your pet. The stimulation may cause your dog to bark, which could lead to him associating the play with correction. In addition, clapping hands or loud talking could cause your pet to receive a false correction through activation of the sensor.

FREQUENTLY ASKED QUESTIONS

Q: Once I use a Bark Control system, will my dog stop barking altogether?

A: Barking is a natural behavior and a needed outlet for a dog. They are very good at learning what situations they are allowed to bark in.

Q: Is it possible for my dog to learn not to bark only when the bark collar is on?

A: Yes. This is best accomplished by placing the bark collar on your dog only in situations where you never want him to bark, and never placing the bark collar on your dog in situations where you find it acceptable for him to bark.

Q: I have more than one dog, but only one dog with a barking problem. Will it cause problems between the dogs if I keep them together?

A: It should not be a problem, especially if you follow the procedures described in this manual.

Q: My pet has a sensitive nature; can I lower the correction level of the collar?

A: An easily replaceable resistor can be obtained by calling our Customer Care Center at 1-800-732-0144.

PRODUCT WARRANTY

Please register your product in our database by mailing in the warranty card or registering online at www.sportdog.net.

All parts are covered under warranty for the life of the product. Labor is covered for the first year of ownership. Thereafter, there is a minimum service charge for the repair or replacement of the product. Misuse, loss, or improper handling is not covered. SportDog™ will not pay for loss of time, inconvenience, loss of use of your product, loss of your product, or any incidental or consequential damages.

SERVICE

If you need service, please contact the Customer Care Center at 1-800-732-0144 for help in troubleshooting and, if necessary, to arrange a repair for your product (a service charge may apply). Also, please visit our website www.sportdog.net. for more Frequently Asked Questions and Troubleshooting Tips.

Radio Systems Corporation
10427 Electric Ave.
Knoxville, TN 37932
1-800-732-0144
www.sportdog.net
400-646